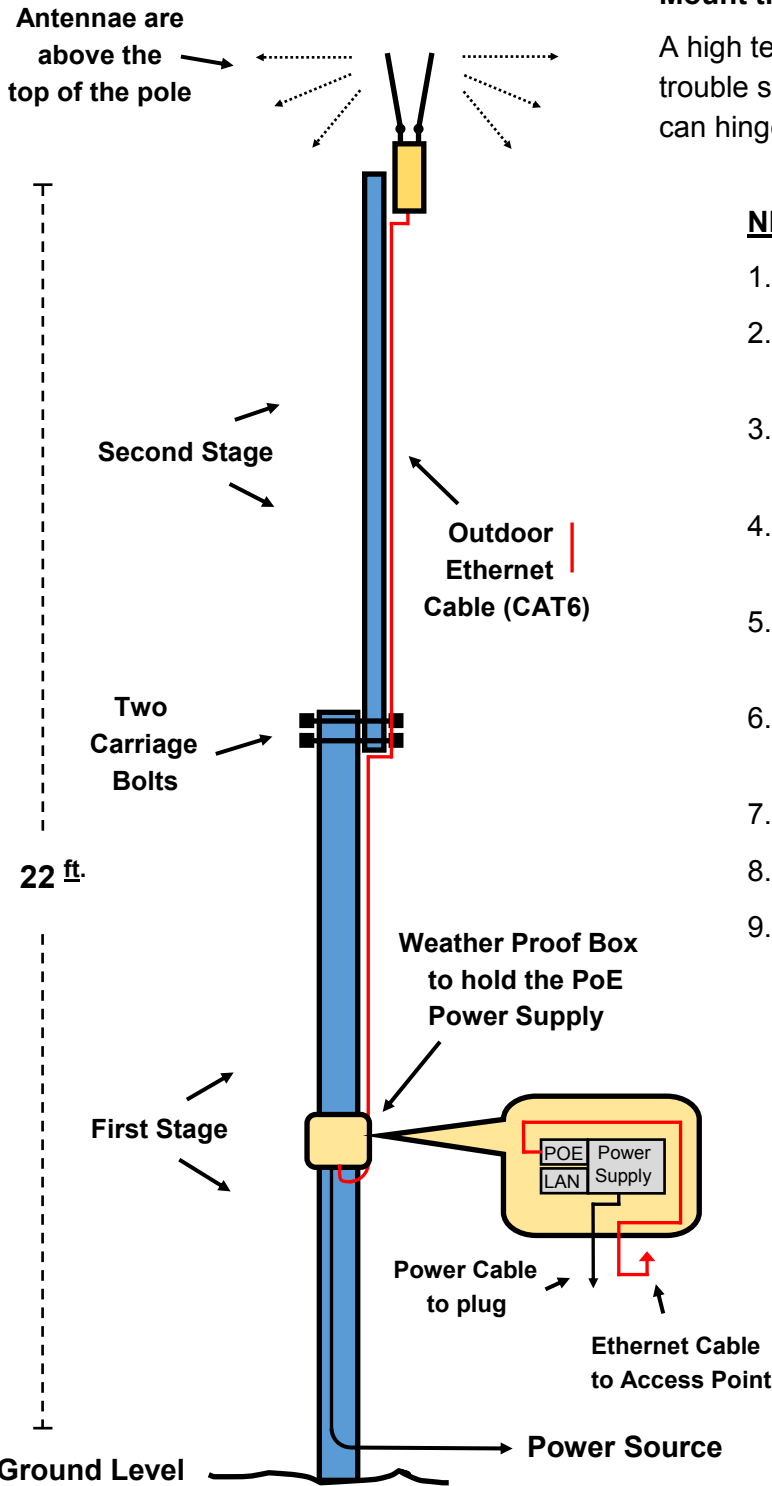


# CheckBox Systems: Outdoor Access Point Connection Diagram

## Illustration of a “Two Stage” Pole

This Access Point is NOT connected to the network with an Ethernet cable. Instead, it will connect wireless through another Access Point. **HINT:** Notice [below] how the ‘LAN’ port on the power supply is not connected.



### Mount the Access Point where it is easy to get back to!

A high tech device will sometimes need to be inspected and trouble shot. This illustration shows how the top of the pole can hinge down easily to easily reach the Access Point.

### NEVER Do These Things:

1. Never let the power supply get wet.
2. Never put a power supply into a plastic bag [or tape] to keep it dry... use an all weather electrician's box.
3. Never place the power where you can't get back to it easily to check if the power light is on (if it is working).
4. Never cover the Access Point or place it in an other enclosure, it is fully water proof.
5. Never mount the access point so the Antenna is blocked by its own pole.
6. Never place within 5 feet of another radio device, CheckBox A/P, NX900 or any other manufacturer.
7. Never let any Ethernet cables get bent or crimped.
8. Never exceed 100 feet of Ethernet cable.
9. Never connect a router or 'smart' switch to the LAN port of the power supply.

### ALWAYS Do These Things:

1. Always keep the power supply dry and in an all weather enclosure designed for that function.
2. Always Mount an Access Point 20-25 above ground.
3. Always keep Access Points at least 4 feet from any reflective (metal) surface (like a metal roof or wall).
4. Always use outdoor rated Ethernet cable.
5. Always be sure that the antenna points straight up.
6. Always have at least two Access Points connected to the Master with Ethernet cables.

Important: Consider the benefits of adding more “Wired anchor points” in the park...plan for a future with Fiber Cable!